



**DBX**  
**TOOLS**  
ENGINEERS WITH EXCELLENCE  
AN ISO : 9001 - 2008 COMPANY

# BOLTING TOOLS



TUBE EXPANDERS    TUBE CUTTER    HYDRAULIC & PNEUMATIC TUBE EXPANSION SYSTEM    PIPE BEVELING MACHINE

# Dh Boiler Xchangers Tools Pvt. Ltd

**DBX Tools** was established, to give customer an better alternative source for their tube tool requirements. After the initial years of struggle and hard work we had proudly extended our services not only throughout India but also in Middle East and European countries.

## Quality

Our quality and inspection department are continuously refining every scope of increasing life of the products. We make sure that customer gets maximum life of the tools. Repeat orders from the customers certify their satisfaction.

## Price

Competitors will surely copy our products but matching our price will not be possible. We being the actual manufactures and our policy to deal directly with the end user makes our prices more competitive.

## ISO- 9001

All the procedure form procurement to dispatch and after sale services are followed as per the guide lines of ISO -9001 model. DBX Tools Pvt. Ltd. will continue to implement and work within the given guidelines.

### Office :-

3101, Bhandup Industrial Estate,  
Pannalal Silk Mill Compound,  
LBS Marg, Bhandup (W),  
Mumbai - 400 078.  
Maharashtra. India

### Works :-

Navasibai Compound,  
Pole No 19, Opp Sapphire Hospital,  
Tikuji-ni-Wadi Road,Chitalsar,  
Manpada,Thane (W),400 610  
Maharashtra India.

### PUNE BRANCH:-

Sr.No. 78/1/1, Sumrudhi Hights,  
'A' Wing,Shop No -2,  
Kokand Nagar , Kalewadi,  
Chinchwad, Pune - 411017.  
Maharashtra. INDIA.

# INDEX

## PRODUCTS

## PAGE NO

### DU SERIES HYDRAULIC TORQUE WRENCH

- 1) **DU Series Square Drive Wrenches** 2
- 2) **DU Series features and Accessories** 3
- 3) **DX Series HEX Drive Wrenches** 4
- 4) **DX Series Accessories** 5
- 5) **DX Series Link chart** 6
- 6) **Hydraulic Power Pack Units** 7

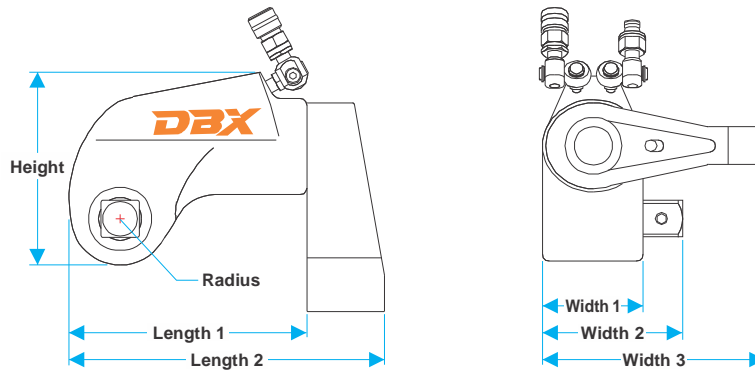


**DU SERIES SPECIFICATIONS**



**Technical**

Model No.	DU-2	DU-3	DU-7	DU-11	DU-27	DU-60
Square Drive	3/4"	1"	1.1/2"	1.1/2"	2.1/2"	2.1/2"
Min. Torque Kg-m(Ft/Lbs)	17(127)	45(330)	102(740)	152(1,100)	376(2,720)	801(5,800)
Max. Torque Kg-m(Ft/Lbs)	175(1,270)	460(3,330)	1020(7,400)	1520(11,010)	3760(27,200)	8018(58,000)
Output Accuracy	+/-3%	+/-3%	+/-3%	+/-3%	+/-3%	+/-3%
Repeatability	100%	100%	100%	100%	100%	100%
Duty Cycle	100%	100%	100%	100%	100%	100%
Tool Weight Kgs/(Lbs)	1.77/(3.90)	4.09/(9.00)	8.64/(19.00)	13.18/(29.00)	31.81/(70.00)	59.00/(130.00)

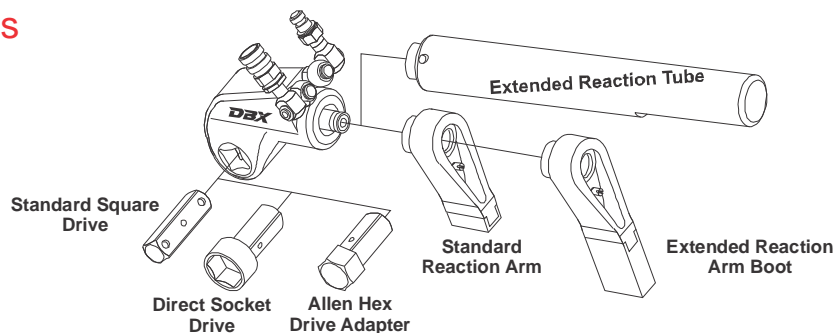


**Dimensions**

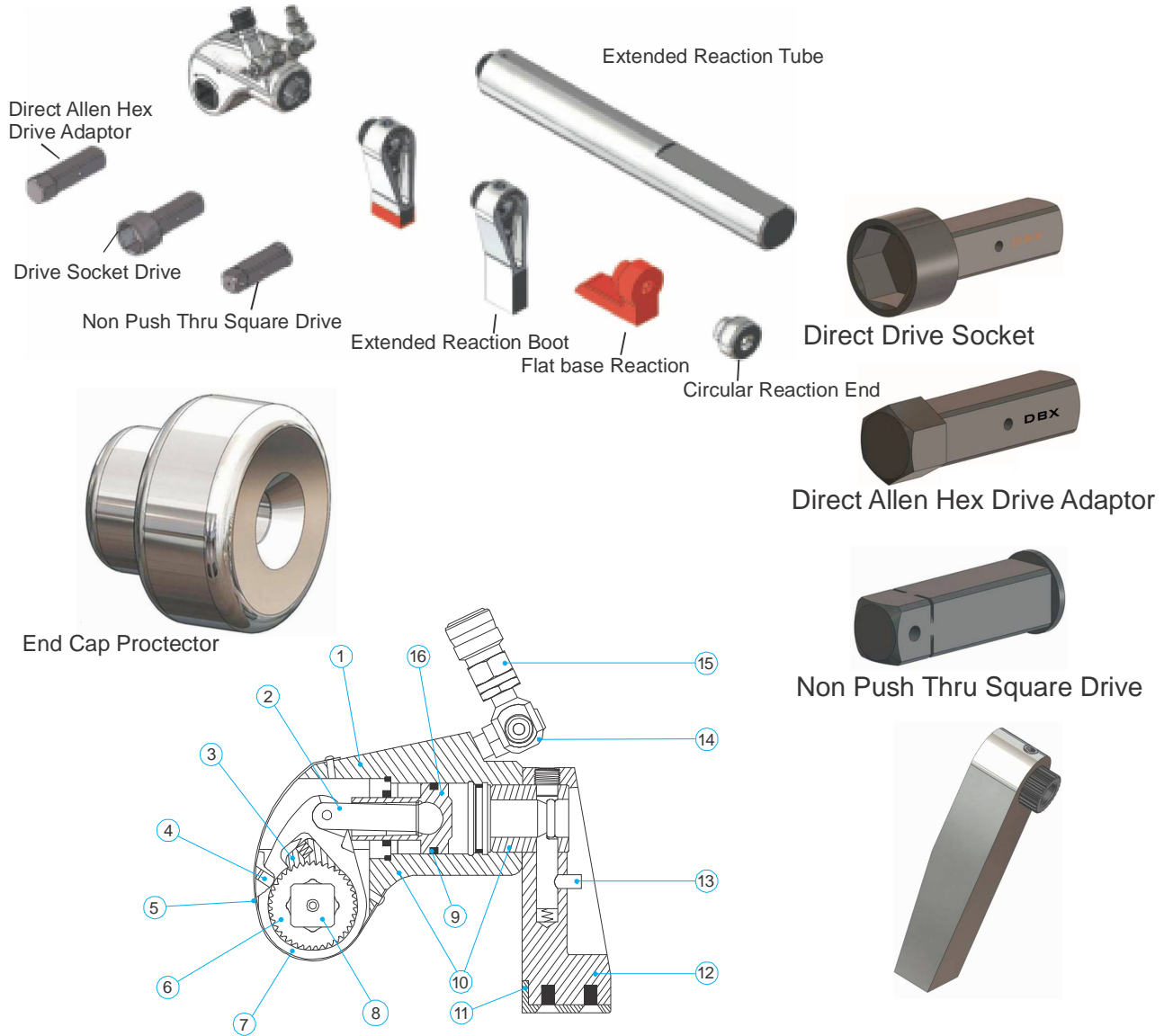
Model No.	DU-2		DU-3		DU-7		DU-11		DU-27		DU-60	
	mm	inch	mm	inch	mm	inch	mm	inch	mm	inch	mm	inch
Height	106.68	4.20	134.62	5.30	177.55	6.99	197.87	7.79	258.83	10.19	292.10	11.50
Length 1	118.87	4.68	154.94	6.10	203.20	8.00	233.93	9.21	312.17	12.29	390.65	15.38
Length 2	157.48	6.20	205.74	8.10	272.80	10.74	310.13	12.21	413.77	16.29	518.16	20.40
Radius	24.89	0.98	33.02	1.30	43.18	1.70	49.53	1.95	61.72	2.43	73.66	2.90
Width 1	50.80	2.00	66.54	2.62	91.69	3.61	99.82	3.93	133.60	5.26	167.13	6.58
Width 2	70.87	2.79	93.47	3.68	128.52	5.06	137.92	5.43	196.34	7.73	225.80	8.89
Width 3	112.27	4.42	147.57	5.81	202.69	7.98	221.49	8.72	295.40	11.63	368.00	14.49

**Note :** • All tool weights include Couplers, Swivels, Reaction Arm and Internal Oil.  
 • The Patented Mono-Body Housing is standard on all models.

**DU Accessories**



**DU SERIES SPECIFICATIONS**



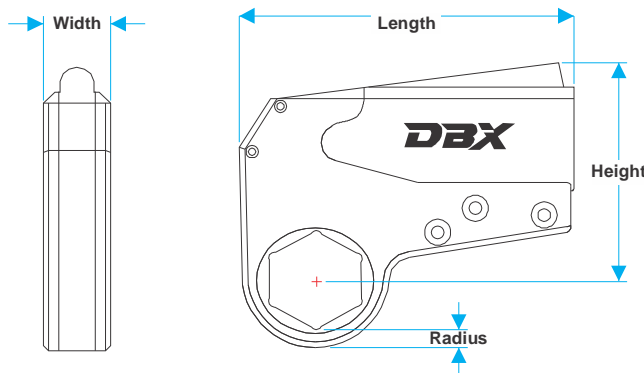
1	Mono Body	No joint One Piece Body.
2	Balanced Drive Rod	Side load free piston movement.
3	Never-Lock Drive Pawl	Ensures tool will NEVER lock up.
4	Anti-Back Lash Mechanism	Provides hands free operation.
5	Laser Engraved Torque Chart	No more searching for charts.
6	Multi-Tooth Ratchet	Allows for 27 degree torque stroke accuracy.
7	One Piece Drive Plate	Robust alloy provides for small nose radius.
8	Push-Through-Drive	Simply push to switch from loosen to tighten.
9	Single Seal Piston	Assures extended maintenance free operation.
10	Direct Housing Reaction	Allows use of tool without reaction arm.
11	Steel Reaction Boot	Field replaceable feature protects reaction arm.
12	Long Length Reaction Arm	Allows for reaction on all applications.
13	Reaction Arm Release Button	Protected within reaction arm housing.
14	360 x 360 Swivel	Allows hose to be cleared on all applications.
15	No-Drip Quick Connect Couplers	Assures easy and safe operation.
16	Steel Alloy Piston	Robust composition allows for longer operation cycle.

**DX SERIES SPECIFICATION**



**Technical**

Model No.	DX-2	DX-4	DX-8	DX-16	TX-32	
Tool Hex	From	19mm / 3/4"	25mm / 1"	50mm / 1.7/8"	65mm / 2.5/8"	80mm / 3.1/8"
	To	60mm / 2.3/8"	80mm / 3.1/8"	105mm / 4"	115mm / 4.5/8"	155mm / 6.1/8"
Min. Torque Kg-m (Ft/Lbs)	26 (192)	54 (395)	115 (830)	215 (1,560)	445 (3,220)	
Max. Torque Kg-m (Ft/Lbs)	260 (1,928)	540 (3,950)	1192 (8,630)	2293 (16,600)	4924 (35,650)	
Output Accuracy	+/- 3%	+/- 3%	+/- 3%	+/- 3%	+/- 3%	
Repeatability	100%	100%	100%	100%	100%	
Duty Cycle	100%	100%	100%	100%	100%	
Corrosion Protection	<b>Standard</b>					
Cylinder Weight Kgs / (Lbs)	1.59 / (3.50)	2.73 / (6.00)	5.32 / (11.70)	7.27 / (16.00)	11.82 / (26.00)	
Link Weight from Kgs / (Lbs)	1.09 / (2.40)	2.45 / (5.40)	5.41 / (11.90)	9.55 / (21.00)	13.18 / (29.00)	
	to Kgs / (Lbs)	1.59 / (3.50)	3.45 / (7.60)	6.59 / (14.50)	12.73 / (28.00)	17.95 / (39.50)

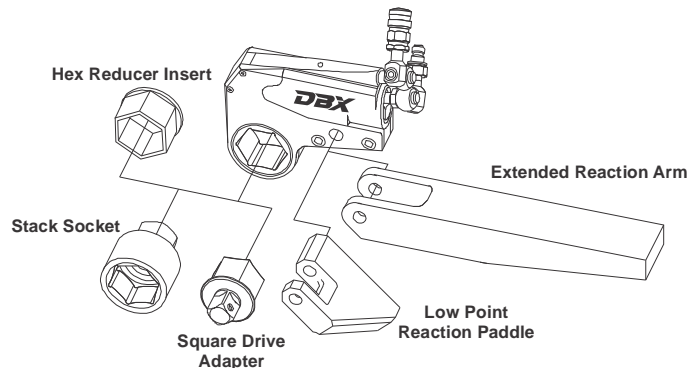


**Dimensions**

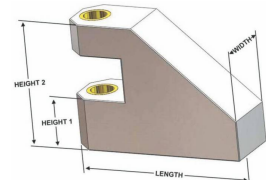
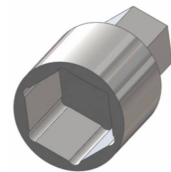
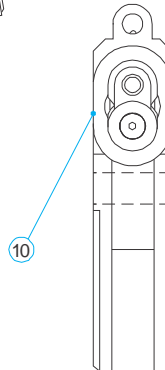
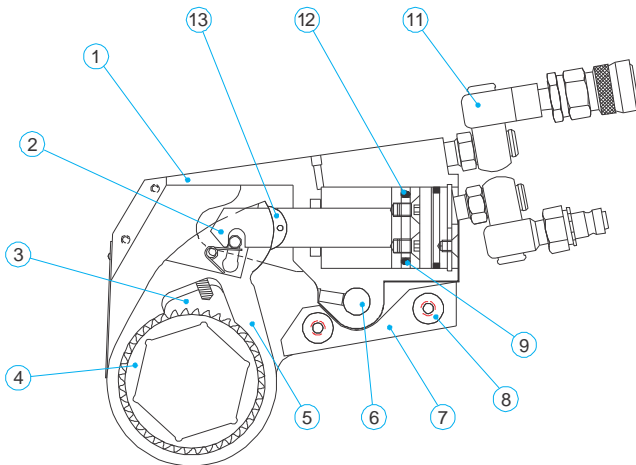
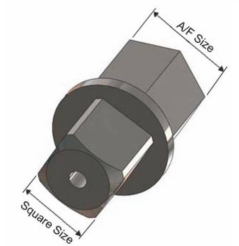
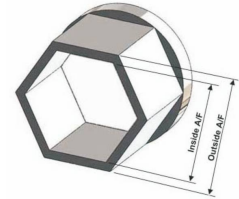
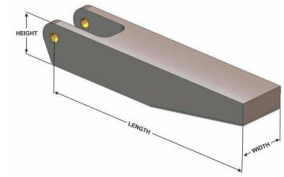
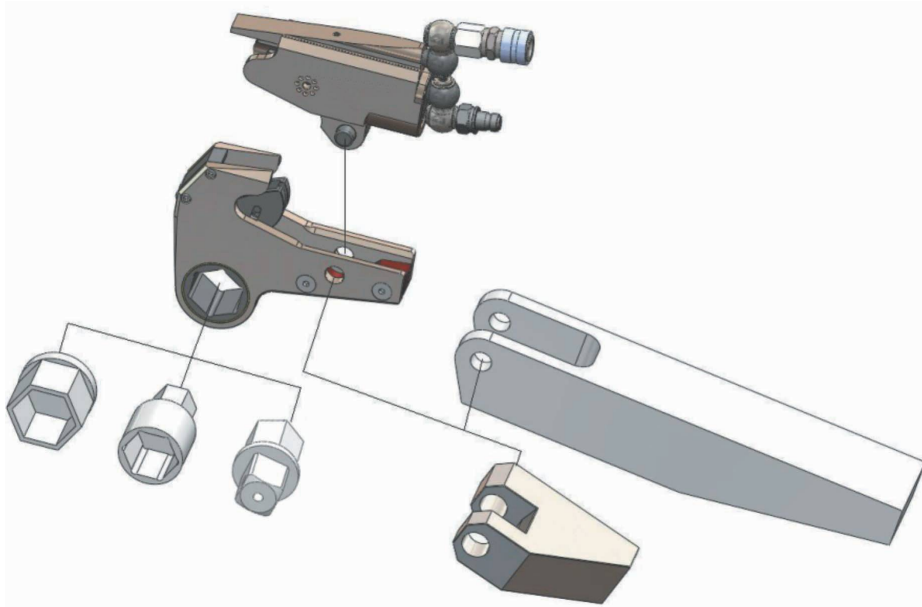
Model No.	DX-2		DX-4		DX-8		DX-16		DX-32	
	mm	inch	mm	inch	mm	inch	mm	inch	mm	inch
Length	144.00	5.67	198.12	7.80	248.92	9.80	328.42	12.93	388.62	15.30
Height	101.60	4.00	142.24	5.60	177.80	7.00	192.53	7.58	276.86	10.90
Width	31.75	1.25	41.40	1.63	52.07	2.05	63.50	2.50	82.30	3.24
Radius	9.14	0.36	11.68	0.46	13.72	0.54	16.51	0.65	23.62	0.93

Note : ● All tool weights include Couplers, Swivels and Internal Oil.

**DX Accessories**



**ACCESSORIES FOR DX -SERIES**



1	Sleek and User Friendly Design	Fit both the cylinder and link in confined areas.
2	Engagement Rod	Automatically engages link on the first stroke.
3	Never-Lock Drive Pawl	Ensures tool will NEVER lock up.
4	Multi-Tooth Ratchet	Allows for 27 degree torque stroke accuracy.
5	One Piece Drive Plate	Robust alloy provides for small nose radius.
6	Link Pin	One pin for link to cylinder engagement. No tools required.
7	In-Line Reaction Pad	Assures torsion free reaction every time.
8	Steel Alignment Pin	Assures equal load displacement between side plates.
9	Piston Tension O-Ring	Tension locks piston seal into "Peanut" bore.
10	Completely Flat Design	Cylinder and link width are equal for tight fits.
11	360 x 360 Swivel	Allows hose to be cleared on all applications.
12	Teflon Piston Seal	Patented technology provides years of maintenance free use.
13	Slider	Prevents wear of piston or drive plate. Reduces costly repairs.

DX SERIES HEX LINKS

DX-2 Link	Hex	DX-4 Link	Hex	DX-8 Link	Hex	DX-16 Link	Hex	DX-32 Link	Hex
Number	Size	Number	Size	Number	Size	Number	Size	Number	Size
DX-2RL012	3/4"	DX-4RL100	1"	DX-8RL114	1.7/8"	DX-16RL210	2.5/8"	DX-32RL302	3.1/8"
DX-2RL013	13/16"	DX-4RL101	1.1/16"	DX-8RL115	1.15/16"	DX-16RL211	2.11/16"	DX-32RL303	3.3/16"
DX-2RL014	7/8"	DX-4RL102	1.1/8"	DX-8RL200	2"	DX-16RL212	2.3/4"	DX-32RL304	3.1/4"
DX-2RL015	15/16"	DX-4RL103	1.3/16"	DX-8RL201	2.1/16"	DX-16RL213	2.13/16"	DX-32RL305	3.5/16"
DX-2RL100	1"	DX-4RL104	1.1/4"	DX-8RL202	2.1/8"	DX-16RL214	2.7/8"	DX-32RL306	3.3/8"
DX-2RL101	1.1/16"	DX-4RL105	1.5/16"	DX-8RL203	2.3/16"	DX-16RL215	2.15/16"	DX-32RL307	3.7/16"
DX-2RL102	1.1/8"	DX-4RL106	1.3/8"	DX-8RL204	2.1/4"	DX-16RL300	3"	DX-32RL308	3.1/2"
DX-2RL103	1.3/16"	DX-4RL107	1.7/16"	DX-8RL205	2.5/16"	DX-16RL301	3.1/16"	DX-32RL309	3.9/16"
DX-2RL104	1.1/4"	DX-4RL108	1.1/2"	DX-8RL206	2.3/8"	DX-16RL302	3.1/8"	DX-32RL310	3.5/8"
DX-2RL105	1.5/16"	DX-4RL109	1.9/16"	DX-8RL207	2.7/16"	DX-16RL303	3.3/16"	DX-32RL311	3.11/16"
DX-2RL106	1.3/8"	DX-4RL110	1.5/8"	DX-8RL208	2.1/2"	DX-16RL304	3.1/4"	DX-32RL312	3.3/4"
DX-2RL107	1.7/16"	DX-4RL111	1.11/16"	DX-8RL209	2.9/16"	DX-16RL305	3.5/16"	DX-32RL313	3.13/16"
DX-2RL108	1.1/2"	DX-4RL112	1.3/4"	DX-8RL210	2.5/8"	DX-16RL306	3.3/8"	DX-32RL314	3.7/8"
DX-2RL109	1.9/16"	DX-4RL113	1.13/16"	DX-8RL211	2.11/16"	DX-16RL307	3.7/16"	DX-32RL315	3.15/16"
DX-2RL110	1.5/8"	DX-4RL114	1.7/8"	DX-8RL212	2.3/4"	DX-16RL308	3.1/2"	DX-32RL400	4"
DX-2RL111	1.11/16"	DX-4RL115	1.15/16"	DX-8RL213	2.13/16"	DX-16RL309	3.9/16"	DX-32RL401	4.1/16"
DX-2RL112	1.3/4"	DX-4RL200	2"	DX-8RL214	2.7/8"	DX-16RL310	3.5/8"	DX-32RL402	4.1/8"
DX-2RL113	1.13/16"	DX-4RL201	2.1/16"	DX-8RL215	2.15/16"	DX-16RL311	3.11/16"	DX-32RL403	4.3/16"
DX-2RL114	1.7/8"	DX-4RL202	2.1/8"	DX-8RL300	3"	DX-16RL312	3.3/4"	DX-32RL404	4.1/4"
DX-2RL115	1.15/16"	DX-4RL203	2.3/16"	DX-8RL301	3.1/16"	DX-16RL313	3.13/16"	DX-32RL405	4.5/16"
DX-2RL200	2"	DX-4RL204	2.1/4"	DX-8RL302	3.1/8"	DX-16RL314	3.7/8"	DX-32RL406	4.3/8"
DX-2RL201	2.1/16"	DX-4RL205	2.5/16"	DX-8RL303	3.3/16"	DX-16RL315	3.15/16"	DX-32RL407	4.7/16"
DX-2RL202	2.1/8"	DX-4RL206	2.3/8"	DX-8RL304	3.1/4"	DX-16RL400	4"	DX-32RL408	4.1/2"
DX-2RL203	2.3/16"	DX-4RL207	2.7/16"	DX-8RL305	3.5/16"	DX-16RL401	4.1/16"	DX-32RL409	4.9/16"
DX-2RL204	2.1/4"	DX-4RL208	2.1/2"	DX-8RL306	3.3/8"	DX-16RL402	4.1/8"	DX-32RL410	4.5/8"
DX-2RL205	2.5/16"	DX-4RL209	2.9/16"	DX-8RL307	3.7/16"	DX-16RL403	4.3/16"	DX-32RL411	4.11/16"
DX-2RL206	2.3/8"	DX-4RL210	2.5/8"	DX-8RL308	3.1/2"	DX-16RL404	4.1/4"	DX-32RL412	4.3/4"
		DX-4RL211	2.11/16"	DX-8RL309	3.9/16"	DX-16RL405	4.5/16"	DX-32RL413	4.13/16"
		DX-4RL212	2.3/4"	DX-8RL310	3.5/8"	DX-16RL406	4.3/8"	DX-32RL414	4.7/8"
		DX-4RL213	2.13/16"	DX-8RL311	3.11/16"	DX-16RL407	4.7/16"	DX-32RL415	4.15/16"
		DX-4RL214	2.7/8"	DX-8RL312	3.3/4"	DX-16RL408	4.1/2"	DX-32RL500	5"
		DX-4RL215	2.15/16"	DX-8RL313	3.13/16"	DX-16RL409	4.9/16"	DX-32RL501	5.1/16"
		DX-4RL300	3"	DX-8RL314	3.7/8"	DX-16RL410	4.5/8"	DX-32RL502	5.1/8"
		DX-4RL301	3.1/16"	DX-8RL315	3.15/16"			DX-32RL503	5.3/16"
		DX-4RL302	3.1/8"	DX-8RL400	4"			DX-32RL504	5.1/4"
								DX-32RL505	5.5/16"
								DX-32RL506	5.3/8"
								DX-32RL507	5.7/16"
								DX-32RL508	5.1/2"
								DX-32RL509	5.9/16"
								DX-32RL510	5.5/8"
								DX-32RL511	5.11/16"
								DX-32RL512	5.3/4"
								DX-32RL513	5.13/16"
								DX-32RL514	5.7/8"
								DX-32RL515	5.15/16"
								DX-32RL600	6"
								DX-32RL601	6.1/16"
								DX-32RL602	6.1/8"



LINKS

Change sizes by removing single link pin  
CYLINDERS



**Quadra-Torc - (4 Port)**

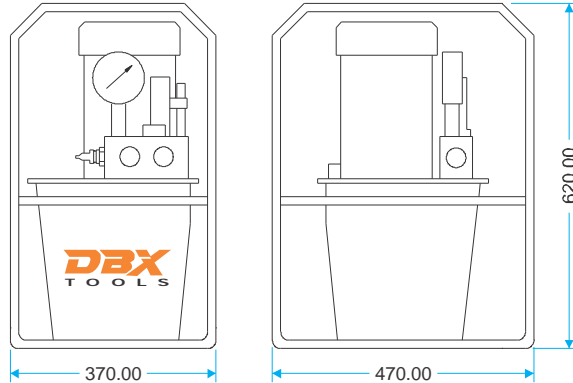
**Electric**



**EP1000**  
*(Shown with Mono-Port)*

**EP1000 -- High Flow - High Speed for Heavy Duty Application**

- Quadra-Torc Multi-Port Manifold (Max. 4 Ports).
- Cool running continuous duty axial piston pump.
- Single phase induction motor.
- 115V and 230V available.
- Starts under full load.
- Runs on reduced voltage.
- Quiet operation (approx. 80 dBA @ 10,000 PSI).
- Rugged remote pendant to control motor and valve.
- Easily adjustable pressure control knob.
- Auto-dump relieves oil pressure from hoses.
- Completely enclosed motor housing and electronics.
- 2 Gallon oil reservoir.
- Precise PSI/BAR pressure gauge.
- Quick-connect no-drip couplers with safety locking collar.
- Supplied with dual non-conductive high pressure hose with couplers.
- Retract pressure is preset at 1,300 PSI.



Resvr. Size (Gal.)	Valve		Motor Specifications	Flow Rate @ 115 VAC		Weight	
	Control	Type		600 psi	10,000 psi	kg	lbs
2	Solenoid	3 Way/2 Pos.	1.5 HP Single Phase	11.47 lpm	0.82 lpm	38	84

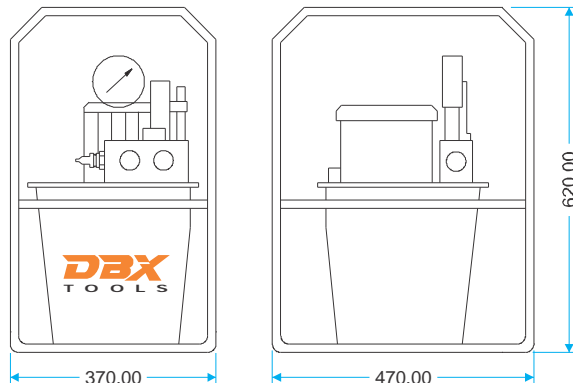
**Pneumatic**



**AP1000**  
*(Shown with Mono-Port)*

**AP1000 -- High Flow - High Speed for Heavy Duty Application**

- Quadra-Torc Multi-Port Manifold (Max. 4 Ports).
- Cool running continuous duty axial piston pump.
- Powerful 1.5HP industrial duty air motor.
- Runs on 50 cfm / 80 PSI of air.
- Quiet operation (approx. 80 dBA @ 10,000 PSI).
- Rugged remote pendant to control motor and valve.
- Easily adjustable pressure control knob.
- Auto-dump relieves oil pressure from hoses.
- Filter-lubricator for long trouble free operation.
- 2 Gallon oil reservoir.
- Precise PSI/BAR pressure gauge.
- Quick-connect no-drip couplers with safety locking collar.
- Supplied with dual non-conductive high pressure hose with couplers.



Resvr. Size (Gal.)	Valve		Motor Specifications	Flow Rate @ 50 cfm/ 90psi		Weight	
	Control	Type		600 psi	10,000 psi	kg	lbs
2	Solenoid	3 Way/2 Pos.	1.5 HP Rotary Air	9.83 lpm	0.82 lpm	27	59

Retract pressure is preset at 1,300 PSI.  
Standard Roll Bar Dimensions : 25-7/16" L x 20-1/2" H x 166-3/4" W

## Hydraulic Tube Expansion System



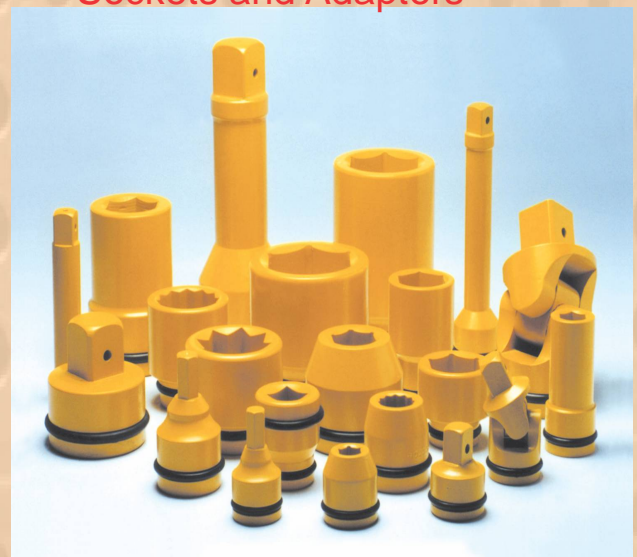
## Tube End Facing & Beveling



## Hydraulic Torque Wrenches



## Sockets and Adaptors



## OUR OTHER PRODUCTS:

### BOLTING TOOLS

HYDRAULIC TORQUE WRENCH

PNEUMATIC TORQUE WRENCH

HYDRAULIC POWERPACK

FLANGE SPREADER

BOLT TENSIONER

NUT SPLITTERS

SOCKETS

### TUBE TOOLS

AIR-DRIVEN BOILER TUBE CLEANING SYSTEM

HEAT EXCHANGER TUBE CLEANING SYSTEM

SUGAR FACTORY TUBE CLEANING TOOLS

PORTABLE TUBE CLEANERS

CLEANING BRUSHES

FLEXIBLE SHAFTS

CUTTERS

# Dh Boiler eXchangers Tools Pvt. Ltd.

AN ISO : 9001 - 2008 / SSI REGISTERED

3101, Bhandup Industrial Estate, Pannalal Silk Mill Compound, L.B.S. Marg, Bhandup (W), Mumbai - 400 078.

Tel. : 91-022-6671 1682, 2594 8419, 2594 8420 • Fax : 91-022-2594 8419

Email : dh.boilertools@gmail.com / sales@dbxtools.in

Website : www.dbxtool.net / www.dbxtools.in / www.tubecleaningtool.com

TIN No.: U29253MH2013PTC251318